

Heuristic Evaluation, Part 2

#4: Consistency and Standards

- People spend more time using *other products* than *your* product
- Users should not have to wonder whether different words, situations, or actions mean the same thing. Follow platform and industry conventions.
- Your "clever" solution can cause confusion

I'm Looking at YOU, Microsoft

Undo Typing ⌘ Z

Redo Typing ⌘ Y

Cut ⌘ X

Copy ⌘ C

Paste ⌘ V

Paste Special... ^ ⌘ V

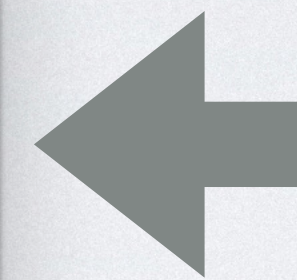
Paste and Match Formatting ⇧ ⌘ V

Clear >

Select All ⌘ A

Find >

Links...

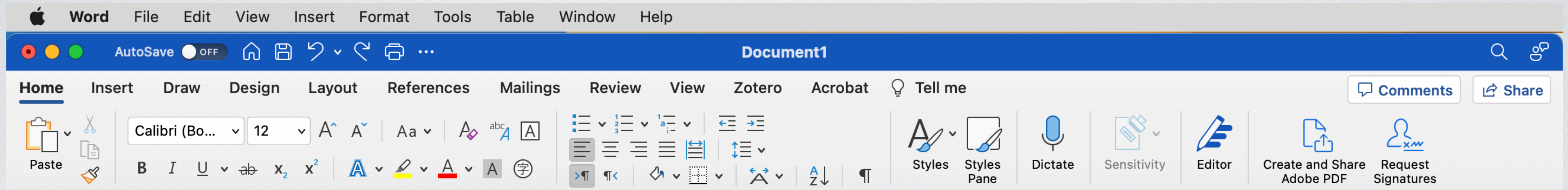


Mac standard for Redo is ⌘ Z

I'm STILL Looking at You, Microsoft

- ^A should move cursor to beginning of line (broken in Microsoft apps)
- Likewise ^E (end of line)

Not Just Shortcuts



- Two (!??) menu bars, THREE different sections of buttons

Error Prevention

- Good error messages are important, but the best designs carefully prevent problems from occurring in the first place. Either eliminate error-prone conditions, or check for them and present users with a confirmation option before they commit to the action.

Southwest

- Can't set return date before departure date

Return date

January 2023

S	M	T	W	T	F	S
1	2	3	4	5	6	7
8	9	10	11	12	13	14
15	16	17	18	19	20	21
22	23	24	25	26	27	28
29	30	31				

February 2023

S	M	T	W	T	F	S
			1	2	3	4
5	6	7	8	9	10	11
12	13	14	15	16	17	18
19	20	21	22	23	24	25
26	27	28				

We are currently accepting air reservations through August 14, 2023.
On February 9, 2023 we will open our schedule for sale through October 4, 2023.
This date is subject to change! Please check back frequently.

Clockify Desktop

Time entry details

Start:

04:56 PM

1/20/2023

End:

04:56 PM

1/20/2023

Total:

What have you worked on?

No project

Create new project

Billable

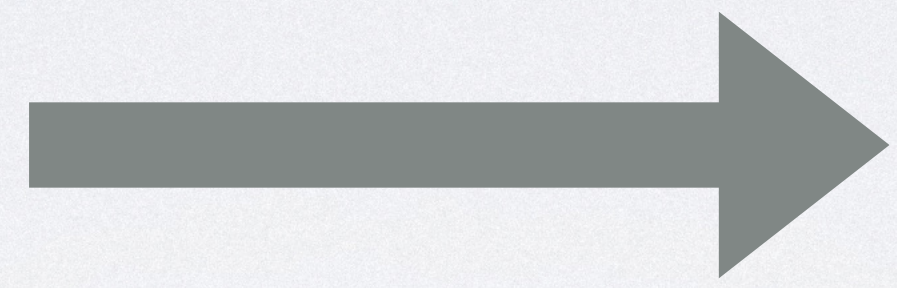
Tags

Create new tag

Find tags

Cancel

Save



Change start time: "2:00"

Time entry details

Start:

02:00 AM

1/20/2023

End:

04:56 PM

1/20/2023

Total:

14:56:00

What have you worked on?

No project

Create new project

Billable

Tags

Create new tag

Find tags

Cancel

Save

#6: Recognition Rather Than Recall

- Minimize the user's memory load by making elements, actions, and options visible. The user should not have to remember information from one part of the interface to another. Information required to use the design (e.g. field labels or menu items) should be visible or easily retrievable when needed.

Command Line vs. GUI

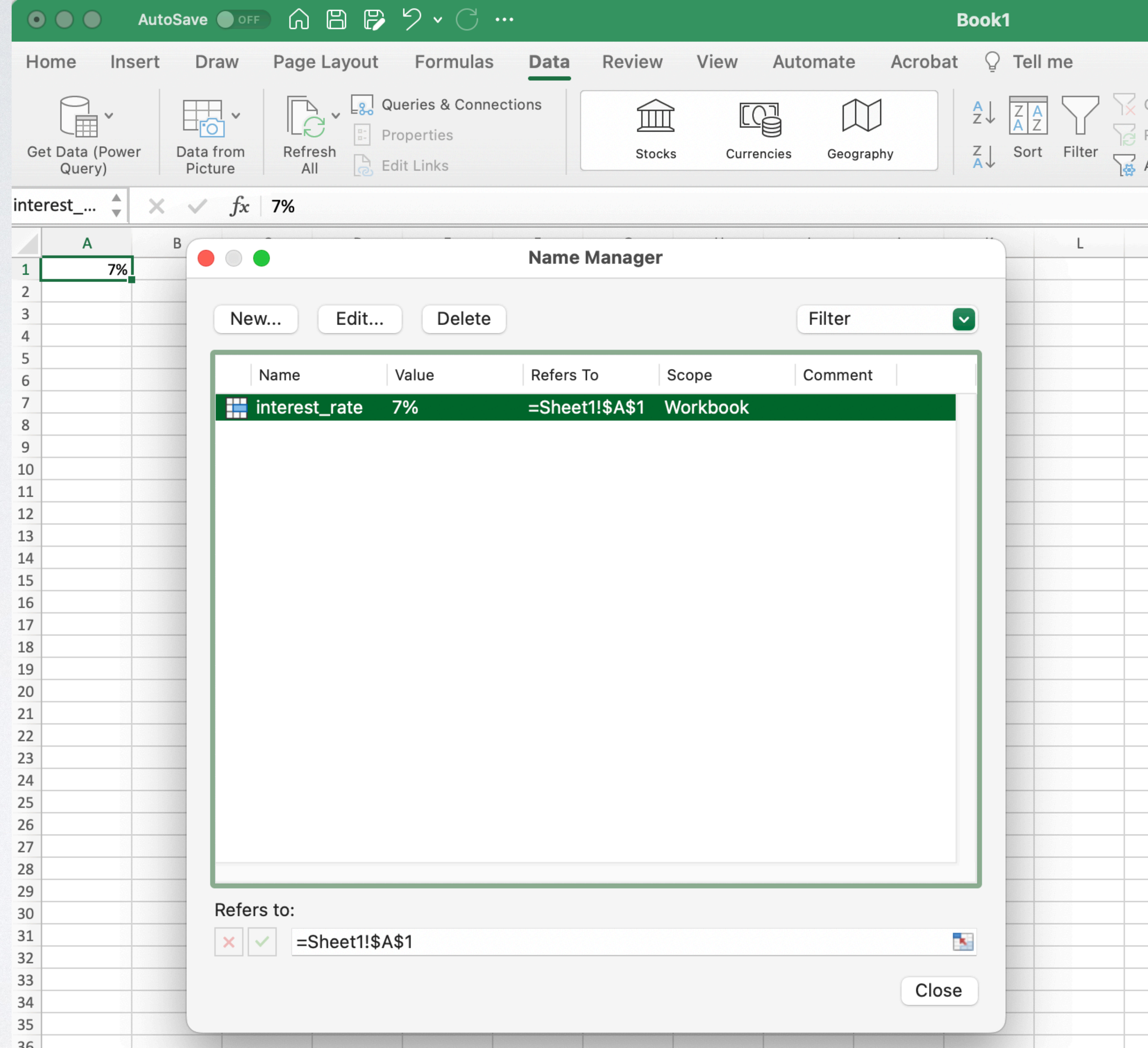
- Command line requires you to remember command names
- GUI gives you lists of possible commands in menus

Capitals

- What's the capital of Portugal?
- Is Lisbon the capital of Portugal?

Excel Name Manager

- Can't see the list of named ranges in the formula editor or in the table
- Instead, use the "Name Manager": a modal dialog box!
- Close the box. What were the names, again?



#7: Flexibility and Efficiency of Use

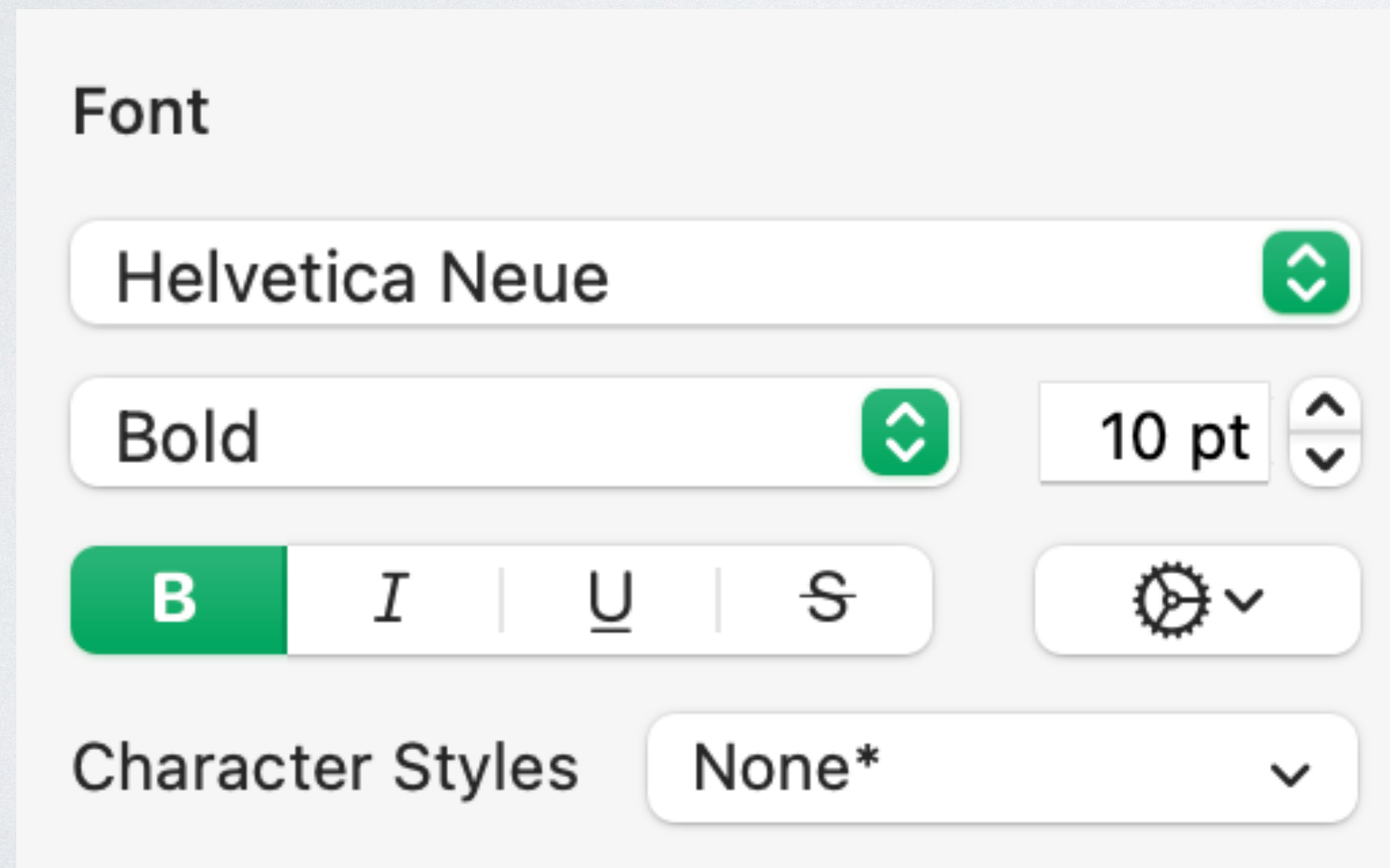
- "Shortcuts — hidden from novice users — may speed up the interaction for the expert user so that the design can cater to both inexperienced and experienced users. Allow users to tailor frequent actions."
- Novices and experts have different needs
 - Novices need *discoverability*
 - Experts need *efficiency*

Sending Lots of Similar Emails

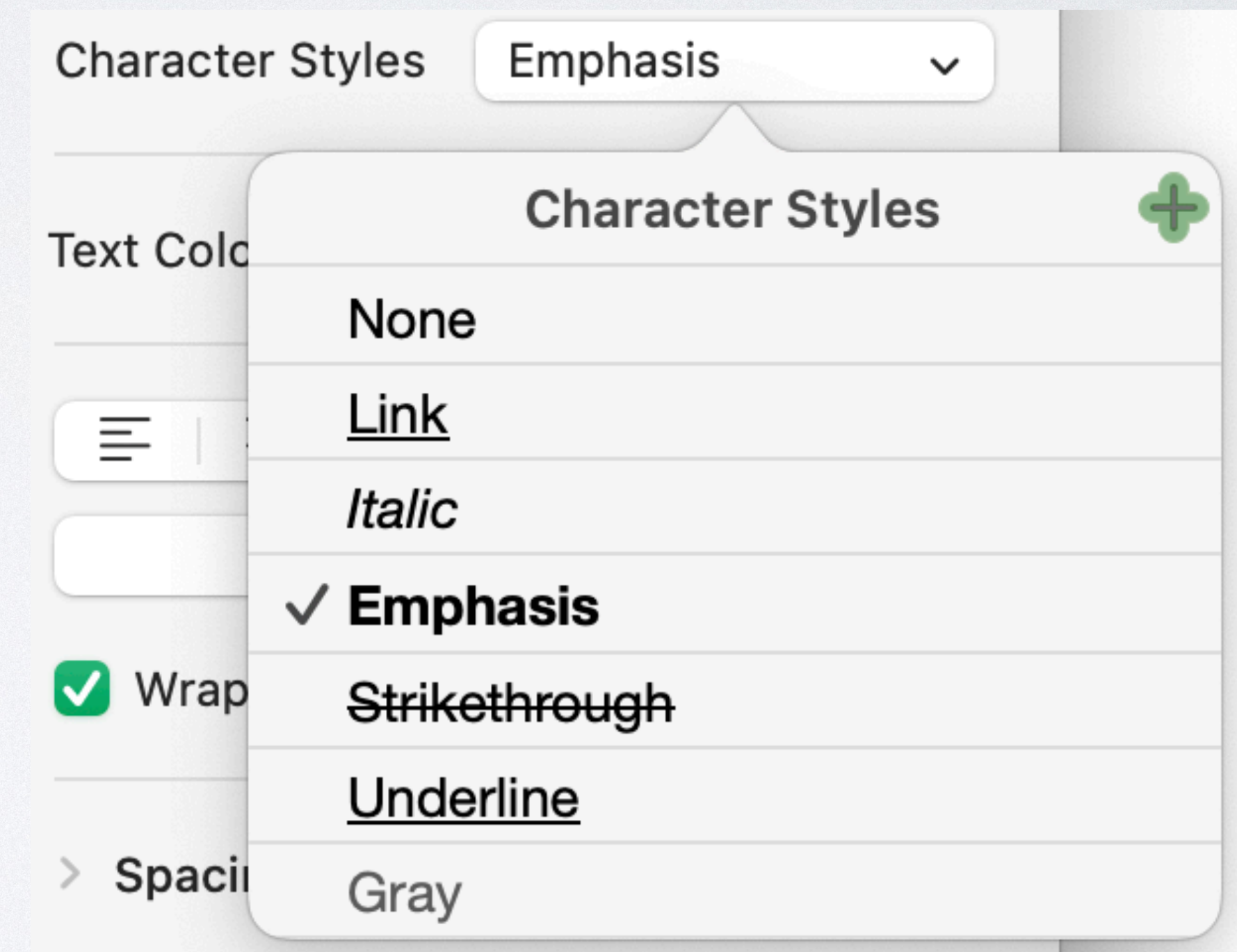
- Retype?
- Copy/paste, modify?
- Standardize, use CC/BCC?
- Mail merge
- Fancy CRM tool

Multiple Methods for One Task

- **To make text bold:**



- ⌘B



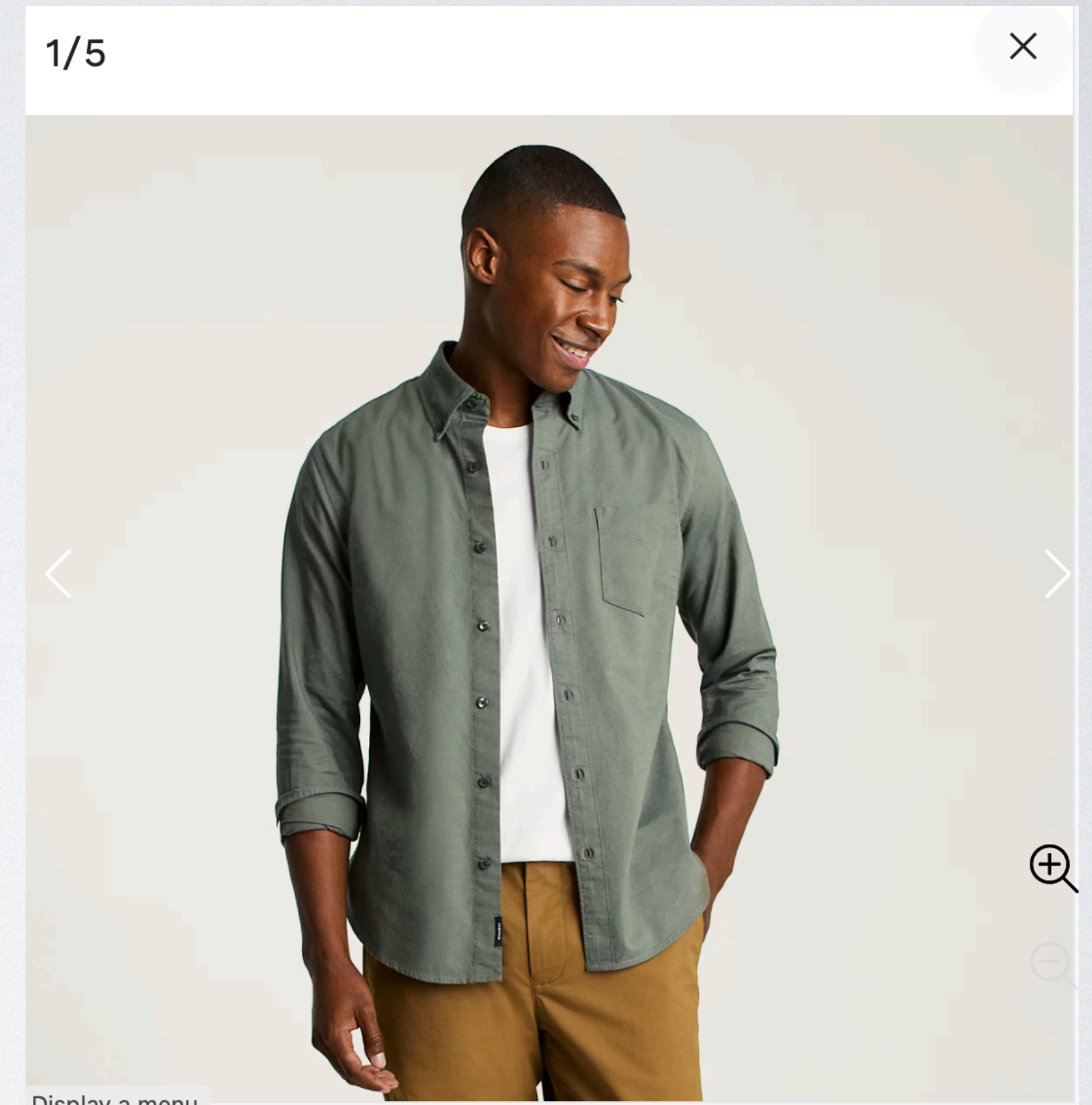
Is More Better?

- Perl motto: "There's more than one way to do it."
- Using a language feature forces maintainers of the code to understand that feature
- But no one cares whether you clicked or used ⌘B to make text bold



Close Boxes

- macOS has close boxes on the *left*. Windows has close boxes on the *right*.
 - Bonobos puts all close boxes on the right. Which heuristic does this violate?
- A. Consistency and standards
- B. Error prevention
- C. Recognition rather than recall
- D. Reliability and Efficiency of use



#8: Aesthetic and Minimalist Design

- "Interfaces should not contain information that is irrelevant or rarely needed. Every extra unit of information in an interface competes with the relevant units of information and diminishes their relative visibility."








Google Search

I'm Feeling Lucky

 Carbon neutral since 2007



Southwest learns the cost of canceling 16,700 flights

Southwest Airlines reported a loss for the fourth quarter, as the company took an \$800 million pretax hit to earnings due to the airline's holiday travel meltdown.


CEO Bob Jordan issues statement »

- 

Why did San Diego waves suddenly turn bright pink?
- 

'Cheers' favorite makes rare TV appearance in series
- 

Store chain bars employees with 'missing, broken' teeth
- 

Bristol Palin has 9th surgery after breast reduction
- 

Former NFL linebacker Jessie Lemonier dies at 25

Stories for you



Celebrity People

Alicia Keys Rocks a Purple Bikini While on Tropical Birthday Getaway: 'Aquarius Energy'

The Grammy winner soaked up the sun in style for her 42nd birthday



Ad SmartAsset

Average Retirement Savings By Age: Are You Normal?

The shocking amount some people have saved, and why speaking with a financial advisor could help increase your returns and alleviate stress.

Trending Now

1.

Tyre Nichols
2.

Patrick Mahomes Injury
3.

Donald Trump
4.

Alex Murdaugh Trial
5.

Russia-Ukraine War
6.

Paul Pelosi
7.

Madison Brooks
8.

Poker Face
9.

Stéphane Rolland
10.

Sean Payton



4 Signs Of Dying Liver (Write These Down)

Ad Liver Renew

Weather

San Diego

Today

Fri

Sat

Sun

68° 41°

68° 44°

60° 50°

55° 46°

See More »

AccuWeather

Scoreboard

Trending

Yesterday

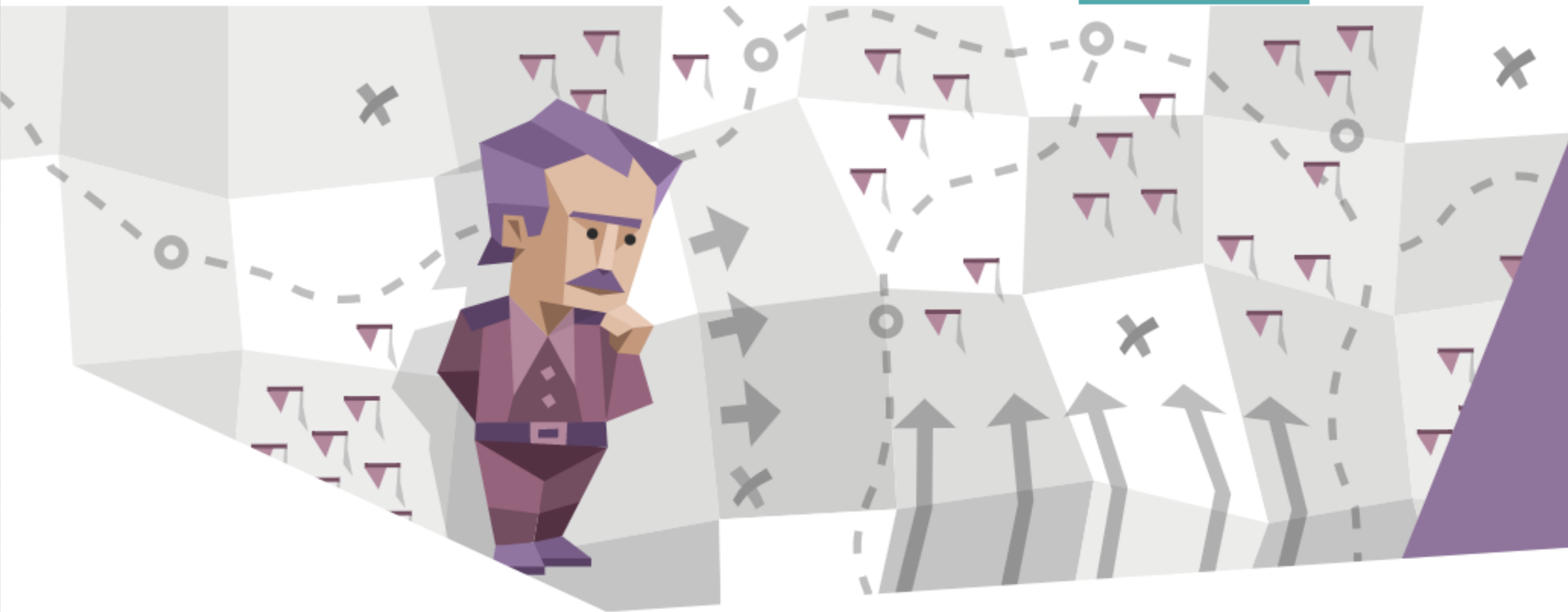
Today

Tomorrow

St. Francis (NY)

22

Half



Architect

Personality

INTJ-A / INTJ-T

(WHAT'S THE DIFFERENCE?)

Explore This Type

Introduction

[Strengths & Weaknesses](#)[Romantic Relationships](#)[Friendships](#)[Parenthood](#)[Career Paths](#)[Workplace Habits](#)

Introduction

WHO IS AN ARCHITECT (INTJ)?

An **Architect (INTJ)** is a person with the [Introverted](#), [Intuitive](#), [Thinking](#), and [Judging](#) personality traits. These thoughtful tacticians love perfecting the details of life, applying creativity and rationality to everything they do. Their inner world is often a private, complex one.

"Thought constitutes the greatness of man. Man is a reed, the feeblest thing in nature, but he is a thinking reed"

New Here?

[Take the Test](#)

Already have your results? [Log in.](#)

#9: Help Users Recognize, Diagnose, and Recover From Errors

- Error messages should be expressed in plain language (no error codes), precisely indicate the problem, and constructively suggest a solution.



Sorry, a system error occurred.

error type 41

To temporarily turn off extensions, restart and
hold down the shift key.

Restart

WRONG

WAY

We have a little problem.



Your Premium payment failed. Please make sure we've got your details right.



DESIGNER'S PLAYLIST

▶ SHUFFLE PLAY

Hei Bae

⬇ Kharfi • Hei Bae



Orbit

⬇ SÿDE • Orbit



I'm Just A Skipping Stone

⬇ Claire Guerreso • I'm Just A Skipping Stone



Beat the Sunrise - Gianni Kosta Remix

⬇ Michael Mizko Wong • SNBRN • Beat The Su...



How Hard I Try - Gianni Kosta Remix

⬇ filous • How Hard I Try (Remixes)



Dream - Gianni Kosta Remix

⬇ Autograf • Dream (Remixes)



How Hard I Try - Gianni Kosta Remix



Welcome to Paradise (Gianni Kosta Remix) [feat...

CS



Home



Browse



Search



Radio



Your Library

Woopsie Daisy!

Looks like something went completely wrong! but don't worry

It can happen to the best of us, and it just happened to you

[Go To Homepage](#)

- Cutesy language is annoying
- Not clear what's wrong or how to fix it
- You probably just lost what you typed (sorry, not sorry)

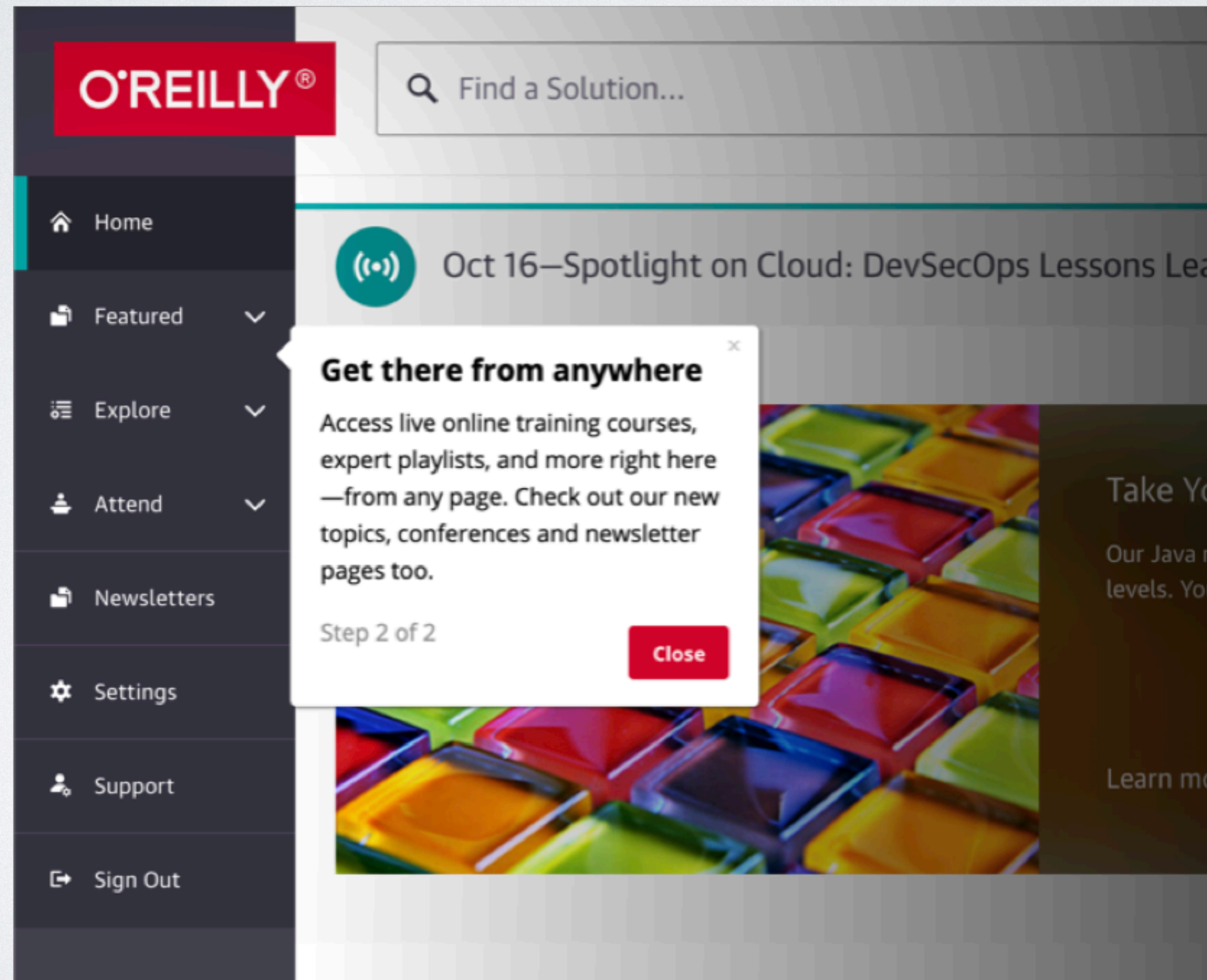
10: Help and Documentation

- It's best if the system doesn't need any additional explanation. However, it may be necessary to provide documentation to help users understand how to complete their tasks.
- Enable search in documentation
- Present documentation in context

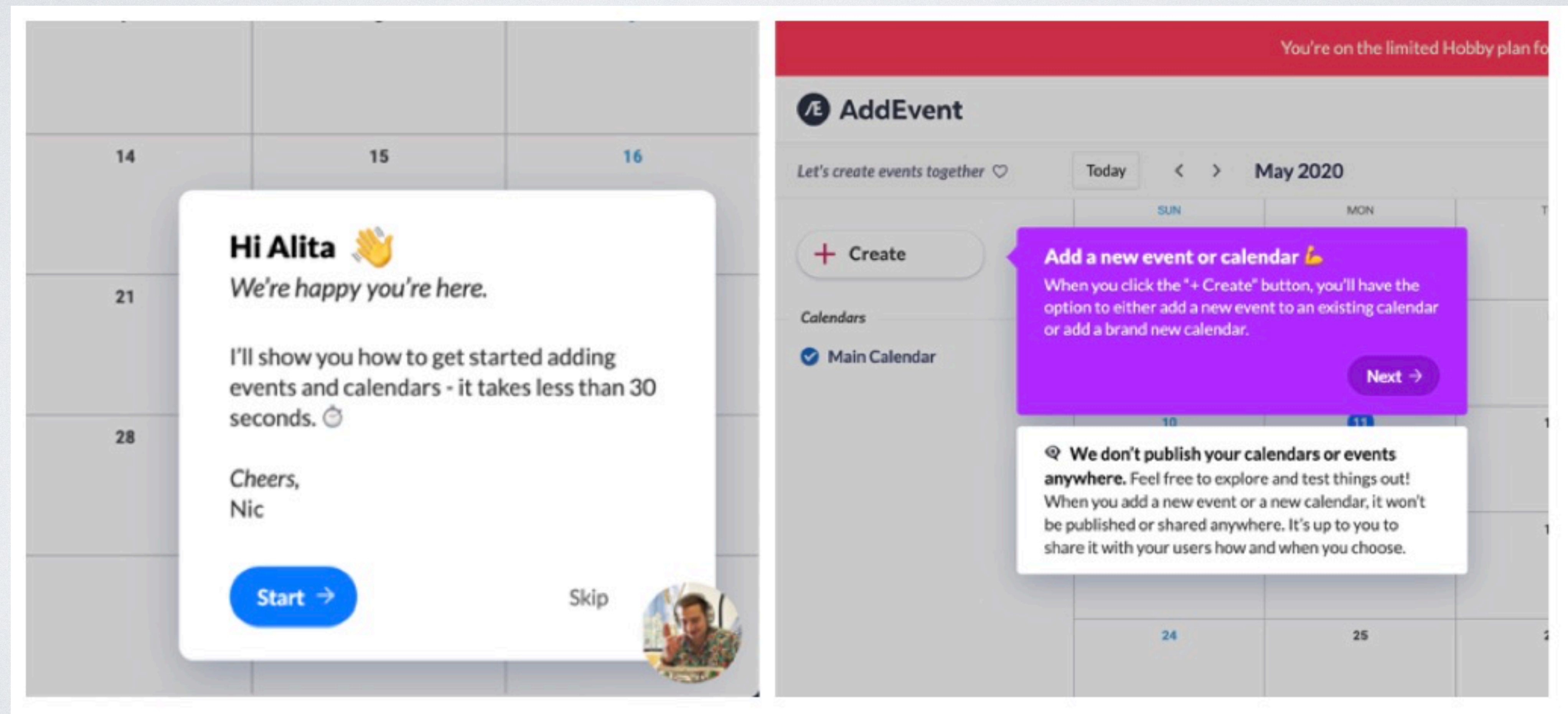
Proactive vs Reactive Help

- Proactive: help before people get stuck (e.g., tutorials)
 - Push: not relevant to user's goals
 - Pull: Just in time
- Reactive: answer questions, troubleshoot problems

Push Revelations



Pull Revelations



Which Is True of Heuristic Evaluations?



- A. HEs provide an objective means of evaluation (results don't depend on evaluator skill)
- B. Good software results HE finding no problems.
- C. Some evaluation criteria conflict with each other, so designers must use their best judgment.
- D. HEs define priorities so that engineers know which problems to fix first.

Activity

- In small groups, do a heuristic evaluation of an app of your choice.
- Try to find problems that you think might present significant usability challenges to users.

Nielsen's Heuristics

- Visibility of system status
- Match between system and the real world
- User control and freedom
- Consistency and standards
- Error prevention
- Recognition rather than recall
- Flexibility and efficiency of use
- Aesthetic and minimalist design
- Help users recognize, diagnose, and recover from errors
- Help and documentation